

# Globe

## Series S127



### Performance Features

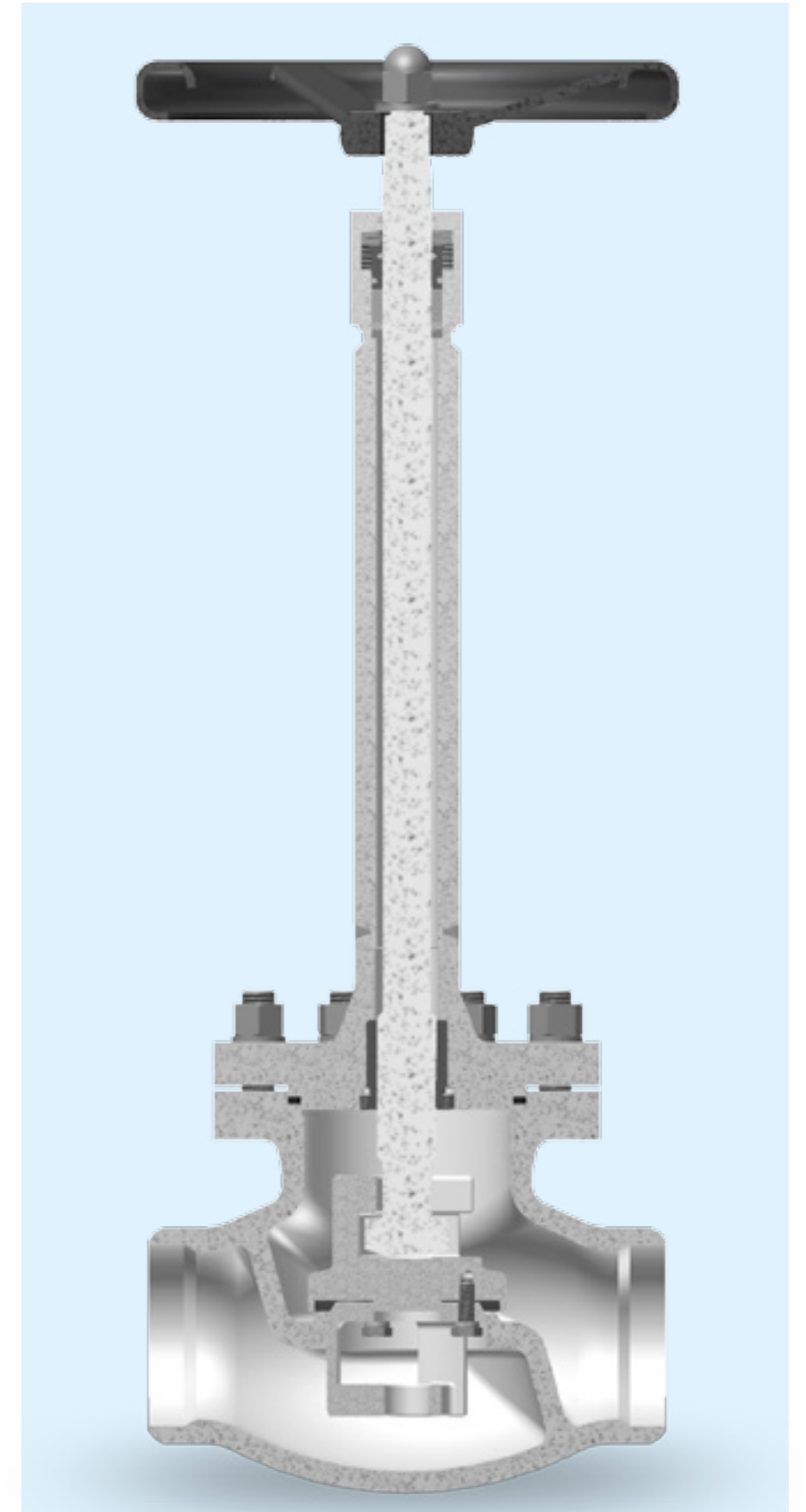
- Precision cast body and exquisite appearance
- Full bore
- Bolted bonnet
- Sealing well
- Low torque, long life
- Easy maintenance
- Cleaned and degreased for oxygen service.  
*Please contact us for other applications.*

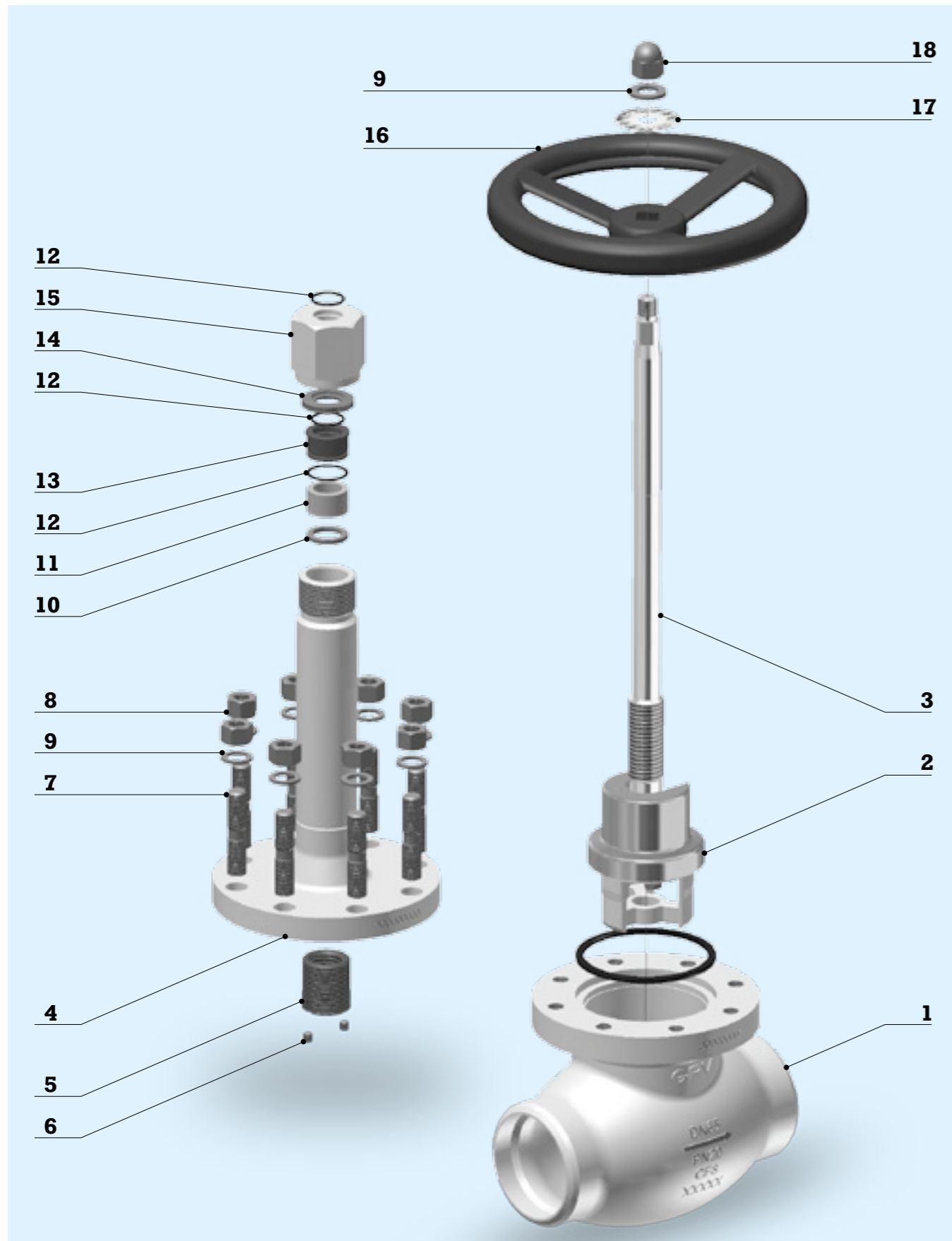
### Specifications

- **Design Standard:** DIN3356, BS6364
- **Test Standard:** BS6364
- **Temperature:** -196°C ~ +80°C
- **Rating:** PN20 ~ PN110
- **Size:** 1/4" (8mm) ~ 12" (300mm)
- **End Connection:** Flanged, BW, SW
- **Service:** LNG, LO<sub>2</sub>, LN<sub>2</sub> etc.
- **Operation:** Manual, Pneumatic, Electric, Hydraulic.

### Main Parts & Materials

- **Body:** Austenitic stainless steel (casting/forging)
- **Disc:** ASTM A182 F304/F316
- **Bonnet:** Stainless steel assembly parts
- **Stem:** ASTM A182 F304/F316
- **Handwheel:** Carbon Steel
- **Packing:** PTFE
- **Seat:** PCTFE.

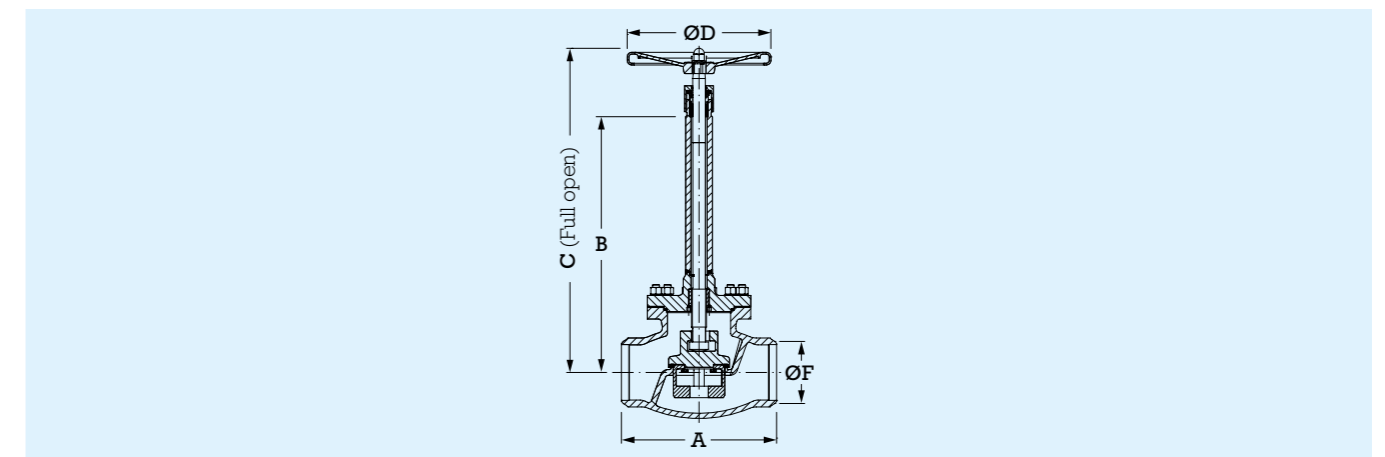




## Identification of the Valve Parts

Item	Part Name	Item	Part Name	Item	Part Name
1	Body	7	Bolt	15	Gland nut
2	Trim components	8	Nut	16	Hand wheel
3	Stem	9	Ring	17	Nameplate
4	Extended bonnet	10	Packing gasket	18	Acorn nut
5	Stem nut	11	Packing components		
6	Lock screw	12	O-ring		
		13	Packing gland ring		
		14	Belleville spring		

## Connections & Dimensions



## PN20~PN110

mm	Size	A	B	C	D	F	Cv	Kv
	inches							
8	1/4	80	255	355	80	-	2,3	2,0
10	3/8	80	255	355	80	17,2	3,6	3,1
15	1/2	80	255	355	80	21,3	3,97	3,4
20	3/4	100	273	370	100	26,9	7,12	6,1
25	1	100	273	370	100	33,7	13,3	11,4
32	1 1/4	110	283	402	120	42,4	18,7	16,0
40	1 1/2	125	289	430	140	48,3	28,5	24,4
50	2	165	355	485	160/200 (1)	60,3	44,0	38,0
65	2 1/2	190	367	502	200/220 (1)	76,1	75,3	64,5
80	3	220	432	588	220/250 (1)	88,9	114,0	98,0
100	4	270	445	601	250/280 (1)	114,3	177,0	152,0
150	6	350	531	717	280/350 (1)	168,0	400,0	343,0
200	8	460	622	853	350	219,0	523,1	610,4
250	10	650	707	962	450	273,0	817,5	954,0
300	12	750	760	1020	500	324,0	1176,8	1373,0

### Note:

1. Data only for PN110.

2. The sizes in the chart are only applicable to PN 20 to PN 110.

3. All dimensions are in mm.